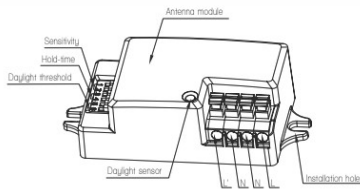
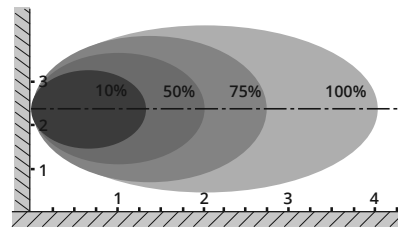


Structure:

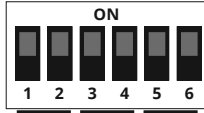


Wall mounting:



Wall mounted height: 2.4m
Sensitivity: 100%/75%/50%/10%
Slow moving speed (Speed: 0.3m/s)

DIP Switch settings:



Detection Area Hold Time Daylight
Detectiegebied Nalooptijd Daglicht

Factory Setting:

Detection Area: 10% / Hold Time: 5min / Daylight Function: Disable

Fabriekinstelling:

Detectiegebied: 10% / Nalooptijd: 5min / Daglicht Functie: Uitschakelen

ATTENTION!
To change the sensor settings the sensor must be unscrew to access to the dipswitches.

Detection Area

Detectiegebied

| ON | | 1 | 2 | | Wall mounting | |
|-----|-----|------|---|------|---------------|--|
| ON | ON | 100% | | 100% | 3.5-4 m | |
| ON | OFF | 75% | | 75% | 2.5-3m | |
| OFF | ON | 50% | | 50% | 2-m | |
| OFF | OFF | 10% | | 10% | 1.5m | |

Hold Time

Nalooptijd

| ON | | 3 | 4 | |
|-----|-----|-------|---|--|
| ON | ON | 5s | | |
| ON | OFF | 90s | | |
| OFF | ON | 5min | | |
| OFF | OFF | 15min | | |

Hold Time:

This determines the time the lamp remains at 100%. It can be set at 5s, 90s, 5min or 15min.

Nalooptijd:

Dit bepaalt de tijd dat het armatuur op 100% niveau blijft branden. Dit kan ingesteld worden op 5s, 90s, 5min of 15min.

Daylight Function

Daglicht Functie

| ON | | 5 | 6 | |
|-----|-----|---------|---|--|
| ON | ON | Disable | | |
| ON | OFF | 50 lux | | |
| OFF | ON | 10 lux | | |
| OFF | OFF | 2 lux | | |

Daylight function:

The lamp remains off during motion if the daylight level is above the selected value settings (2, 10 or 50 lux). When the lux level is below selected setting (2, 10 or 50 lux) the lamp turns on if motion is detected. After set hold time has elapsed the lamp will turn off.

Daglicht functie:

Armatuur blijft uit bij bewegingsdetectie indien het daglichtniveau boven de bij ingestelde waarden instellen ligt (2, 10 or 50 lux). Wanneer het omgevingslicht onder de waarden instellen (2, 10 or 50 lux) komt schakelt het armatuur zich automatisch aan. Na afloop van de nalooptijd gaat het armatuur uit.

Warning

- Only qualified electrician is allowed to do installation, maintenance and inspection for safety concern. It is dangerous for non-professional operators.
- Power should be cut off before installation, maintenance or inspection.
- Please install and use the product strictly according to the instruction.
- Do not disassemble or remold the product at will to avoid accident of electric shock or light falling.
- Working out of temperature range of -20 ~ +50 will shorten the lifetime of the product.

